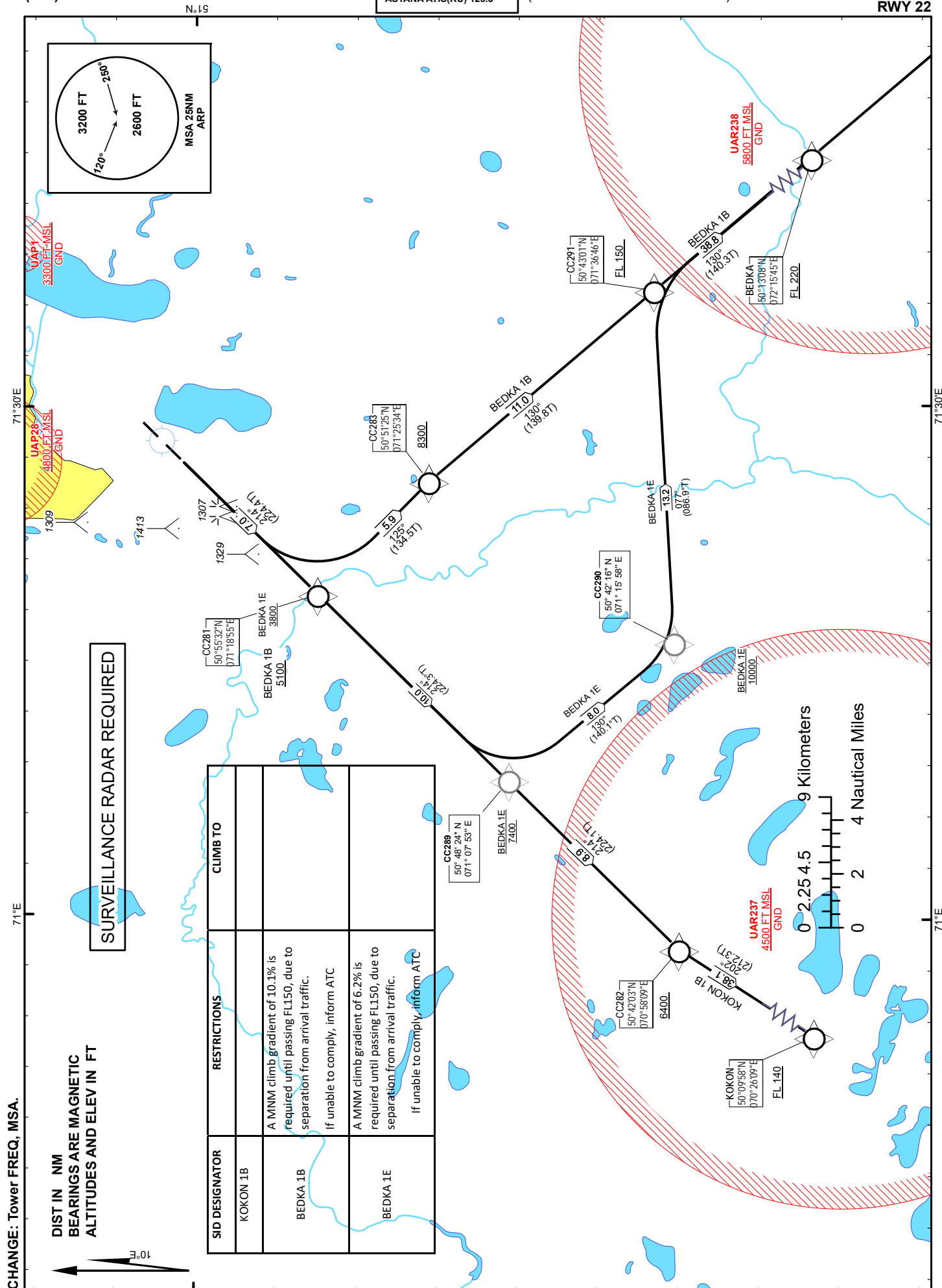


ASTANA  
NURSULTAN NAZARBAYEV  
INTERNATIONAL AIRPORT  
RWY 22



**TABULAR DESCRIPTION**

BEDKA 1B RWY22											
Serial Number	Path Descriptor	Waypoint Identifier	Fly - over	Course °M(°T)	Magnetic Variation(°)	Distance NM	Turn Direction	Altitude FT	Speed KT	VPA (°)	Navigation Specification
10	CF	CC281	-	214(224.4)	10	7	-	+5100	-250	6.6	RNAV1
20	TF	CC283	-	125(134.5)	10	5.9	L	+8300		6.6	RNAV1
30	TF	CC291	-	130(139.8)	10	11	R	+FL150		6.6	RNAV1
40	TF	BEDKA	-	130(140.3)	10	38.8	-	+FL220		1.9	RNAV1

**WAYPOINT LIST**

BEDKA 1B											
Waypoint Identifier	Coordinates										
DER	510031.69N	0712641.10E									
CC281	505532.44N	0711855.42E									
CC283	505124.63N	0712534.27E									
CC291	504301.41N	0713646.15E									
BEDKA	501318.00N	0721545.00E									

**WAYPOINT LIST**

BEDKA 1E											
Waypoint Identifier	Coordinates										
DER	510031.69N	0712641.10E									
CC281	505532.44N	0711855.42E									
CC289	504824.01N	0710753.04E									
CC290	504216.41N	0711558.43E									
CC291	504301.41N	0713646.15E									
BEDKA	501318.00N	0721545.00E									

**TABULAR DESCRIPTION**

BEDKA 1E RWY22											
Serial Number	Path Descriptor	Waypoint Identifier	Fly - over	Course °M(°T)	Magnetic Variation(°)	Distance NM	Turn Direction	Altitude FT	Speed KT	VPA (°)	Navigation Specification
10	CF	CC281	-	214(224.4)	10	7	-	+3800	-250	3.5	RNAV1
20	TF	CC289	-	214(224.3)	10	10	-	+7400		3.5	RNAV1
30	TF	CC290	-	130(140.1)	10	8	L	+10000		3.5	RNAV1
40	TF	CC291	-	77(86.9)	10	13.2	L	+FL150		3.5	RNAV1
50	TF	BEDKA	-	130(140.3)	10	38.8	R	+FL220		1.9	RNAV1

**TABULAR DESCRIPTION**

KOKON 1B RWY22											
Serial Number	Path Descriptor	Waypoint Identifier	Fly - over	Course °M(°T)	Magnetic Variation(°)	Distance NM	Turn Direction	Altitude FT	Speed KT	VPA (°)	Navigation Specification
10	CF	CC281	-	214(224.4)	10	7	-	+2600	-250	1.9	RNAV1
20	TF	CC289	-	214(224.3)	10	10	-	+4600		1.9	RNAV1
30	TF	CC282	-	214(224.1)	10	8.9	-	+6400		1.9	RNAV1
40	TF	KOKON	-	202(212.3)	10	38.1	L	+FL140		1.9	RNAV1

WAYPOINT LIST											
KOKON 1B											
Waypoint Identifier	Coordinates										
DER	510031.69N	0712641.10E									
CC282	504202.54N	0705809.22E									
KOKON	500958.00N	0702609.00E									